



DIE MODUL MANUFAKTUR
100% MADE IN GERMANY

SOLUXTEC POWERSLATE ALBARINO

Mono Serie



20 year warranty



Low carbon footprint



Extremely lightweight Design



100% Quality Assurance



Linear Performance Guarantee



5400 Pa max load capacity



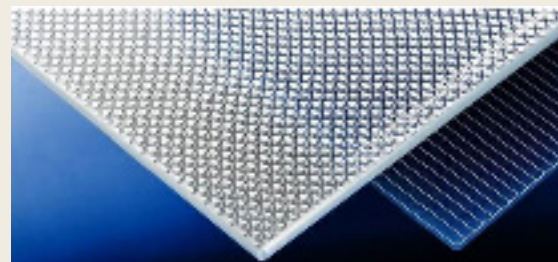
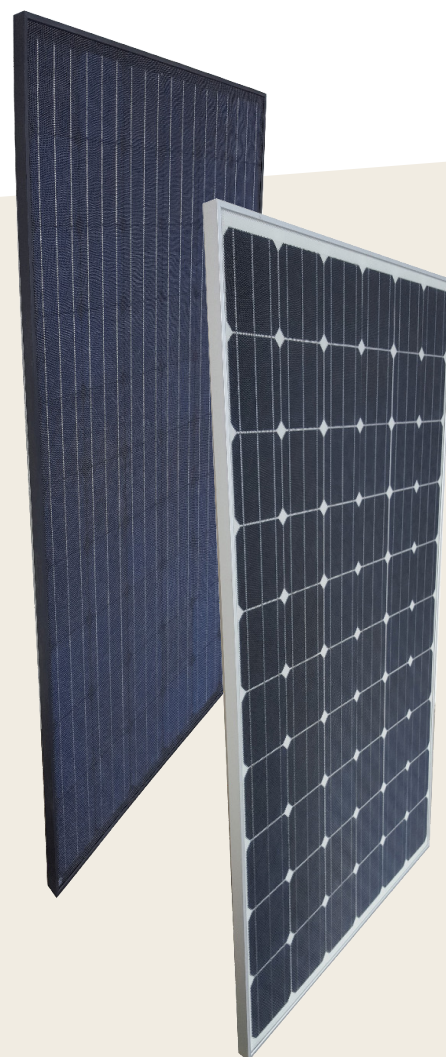
Innovative Junction Box



Excellent thermal Properties



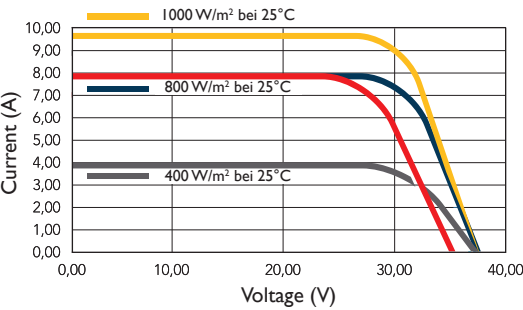
Positive performance Tolerance



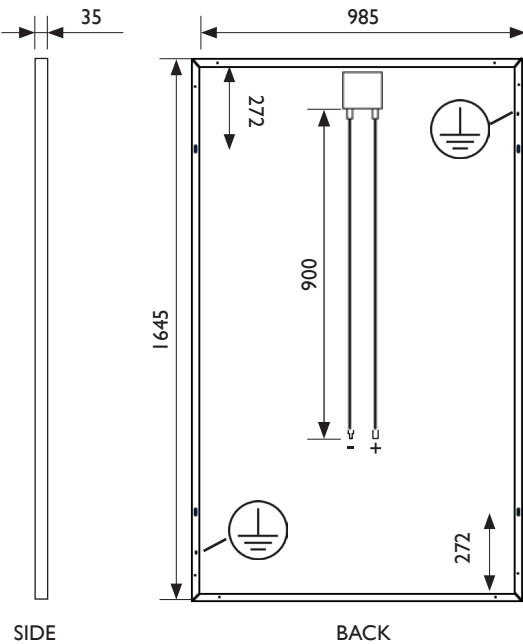
SOLUXTEC POWERSLATE

Mono Serie

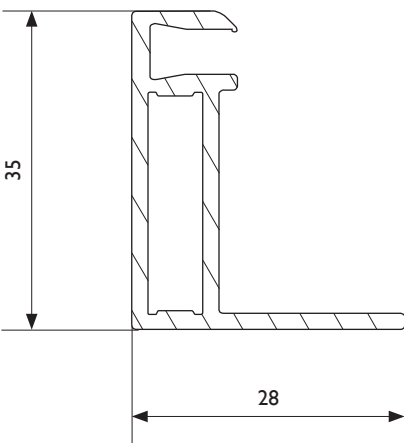
I-V CURVES



MODULE DIMENSIONS



FRAME DIMENSIONS

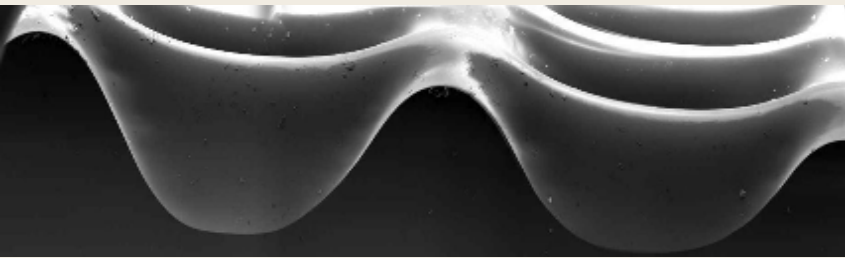


SOLUXTEC

Soluxtec GmbH, Werner von Siemens Str. 25, 54634 Bitburg
Tel.: +49 65 61 69 37 265 Fax: +49 65 61 69 40 521
E-Mail: info@soluxtec.de Web: www.soluxtec.eu

ELECTRICAL PERFORMANCE UNDER STANDARD TEST CONDITIONS, 1000 W/m², AM=1.5

Maximum Power	Pmax	Wp	275	280	285	290
Open Circuit Voltage	Voc	V	38,00	38,20	38,40	38,65
Short Circuit	Isc	A	9,01	9,09	9,20	9,47
Maximum Power Point Voltage	Vmpp	V	31,70	31,75	31,80	31,85
Maximum Power Point Current	Impp	A	8,68	8,82	8,97	9,11
Efficiency	%		16,98	17,30	17,60	17,90



THERMAL CHARACTERISTICS	COMPONENTS
STC 25°	Cells Number 60
NOCT 45°	Technology polycrystalline silicon
TC Isc +0,042%/K	Cell Dimension 156 x 156 mm
TC voc - 0,30%/K	Junction Box IP 67 ventilated
TC Pmpp - 0,39%/K	Connector MC4
	Glass tempered+patterned
	Glass Thickness 4,0 mm

GENERAL CHARACTERISTICS	INTEGRATION CHARACTERISTICS
Module Weight 20 kg	Max. System Voltage 1000 Vdc
Color black / white	Protection Class A
Frame Color black / silver	Operating Temperature Range - 40 ... + 80
Total Thickness 35 mm	Max. Reserve Current 16 A

CERTIFICATIONS

IEC 61215
EN 61730

PERFORMANCE WARRANTY

Linear
80,20% after 25 years

PRODUCT WARRANTY

20 years

POWER TOLERANCE*

0/+3% auf Pmpp
PFlash > Pmpp

This data Sheet complies with the requirements of EN 50380.
Soluxtec reserves the right to make specification changes without prior notice (2017).
* Flasher AAA, Power tolerance measurement of +/- 3%.