



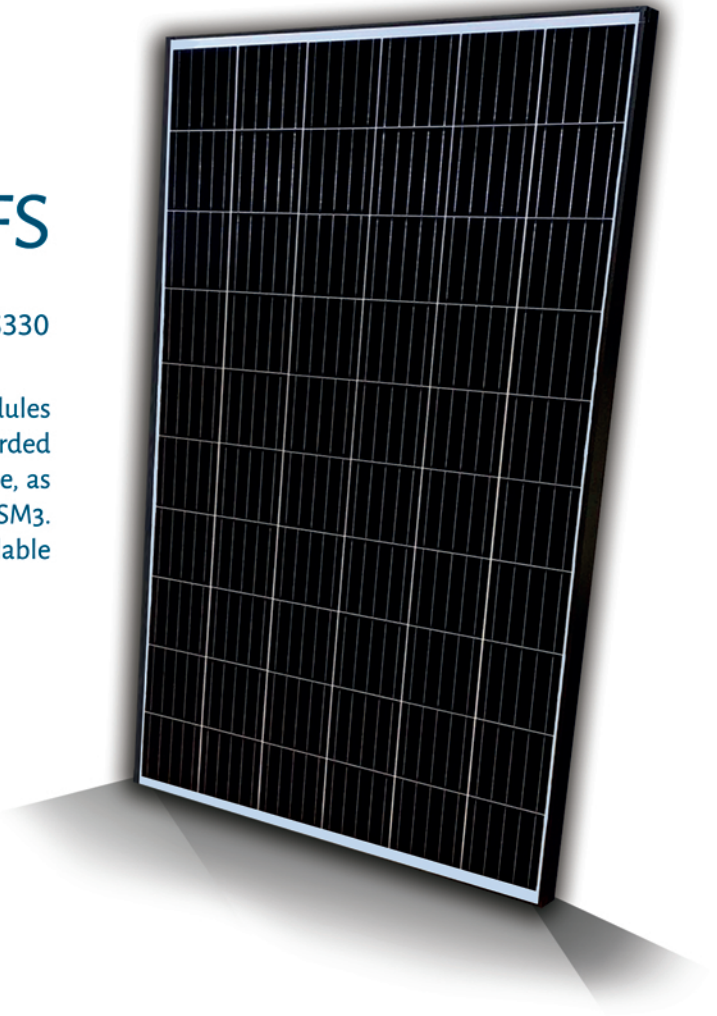
**SOLUXTEC**  
Quality made in Germany



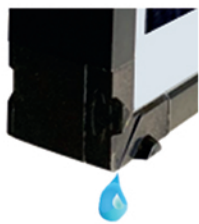
# DAS MODUL MONO FS

DMMFS315 | DMMFS320 | DMMFS325 | DMMFS330

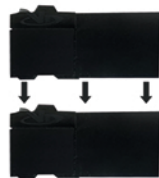
DAS MODUL FS is the latest generation of solar modules developed and manufactured by SOLUXTEC. Already awarded several times for the unique design of its aluminium frame, as well as for the integration of the latest solar cell innovation FSM<sub>3</sub>. DAS MODUL is manufactured with the best materials available and assembled in our German factory.



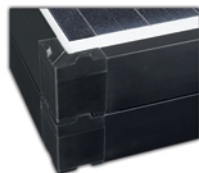
## INNOVATIVE SOLUTIONS



water drainage



Self stackable & Eco friendly design



## FEATURE



Mono FS Perc Cells



Easy to handle  
No sharp sides



100% EL Quality Control



8100 Pa Max test load



Self Stackable Frame & water drainage

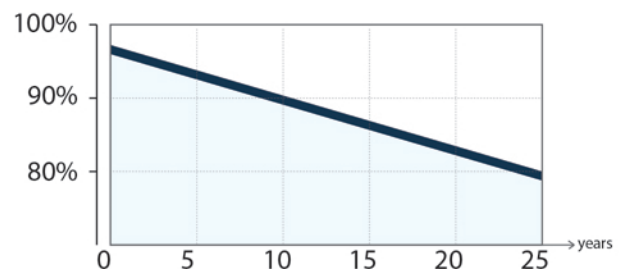


Excellent thermal properties



Positive sorting 0 / + 4,99 Wp

## QUALITY GUARANTEE



20 years product warranty



25 years linear performance warranty

## CERTIFICATIONS



# DAS MODUL MONO FS

DMMFS315 | DMMFS320 | DMMFS325 | DMMFS330

## ELECTRICAL PARAMETERS UNDER STC CONDITIONS

(1000 W/m<sup>2</sup>, 25°C +/- 2°C, AM=1,5 according to IEC 60904\_3)

Model	DMMFS315	DMMFS320	DMMFS325	DMMFS330
Maximum PowerPoint (Pmax)	315	320	325	330
Open Circuit Voltage (Voc)	40,20	40,61	41,11	41,58
Short Circuit Current (Isc)	9,95	10,00	10,05	10,08
Maximum Power Voltage (Vmpp)	32,95	33,00	33,29	33,43
Maximum Power Current (Impp)	9,57	9,71	9,78	9,88
Module Efficiency (%)	18,85	19,15	19,45	19,75
Power Tolerance (Wp)	0 - 4,99 Wp			
Temperature coefficient TC Isc	+ 0,048 %/°C			
Temperature coefficient TC Voc	- 0,330 %/°C			
Temperature coefficient TC Pmpp	- 0,380 %/°C			

Power measurement of flasher unit +/- 3%

## ELECTRICAL PARAMETERS UNDER NMOT CONDITIONS

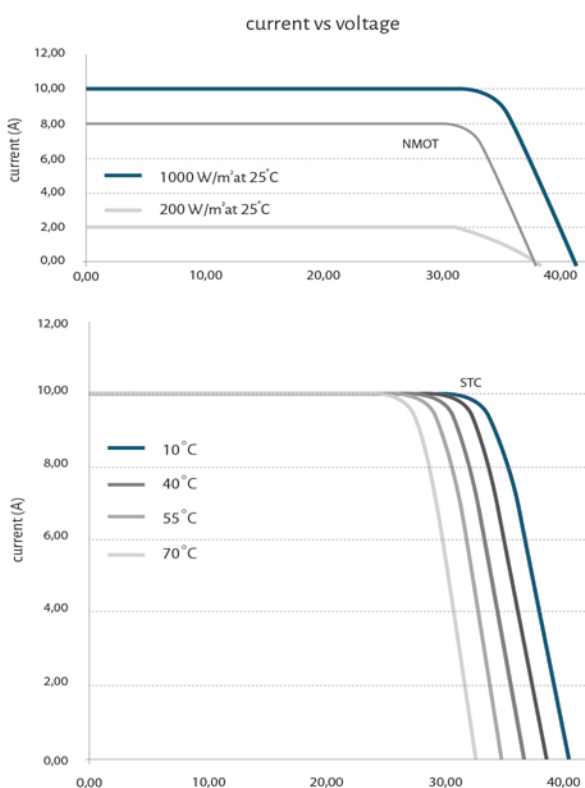
(800 W/m<sup>2</sup> ; NMOT, AM=1,5)

Model	DMMFS315	DMMFS320	DMMFS325	DMMFS330
Maximum PowerPoint (Pmax)	231	235	240	244
Open Circuit Voltage (Voc)	37,10	37,51	38,01	38,48
Short Circuit Current (Isc)	7,96	8,00	8,05	8,07
Maximum Power Voltage (Vmpp)	30,27	30,32	30,61	30,75
Maximum Power Current (Impp)	7,66	7,77	7,83	7,91

## CERTIFICATIONS

IEC 61215, EN 61730, IEC 61701, LVD 2014/35/EU, EMC 2014/30/EU, INMETRO

## CURVES CHARACTERISTICS



## MECHANICAL PROPERTIES

Dimensions	1665x 1005 x 35 mm
Weight	18,5 kg +/- 3 %
Cell	60 mono Perc FS 5bb
Junction Box	IP67, 3 diodes potted
Connectors	MC4 or MC4 compatible
Cables	2 x 900 mm
Solar Glass	3,2 mm tempered ARC

## OPERATING CONDITIONS

Max. Operating Voltage	1000 Vdc
Protection Class	Class II
Operating T° range	-40°C...+85°C
Max. Reverse Current	16 A
STC25°C	+/- 2°C
NMOT45°C	+/- 2°C
Design load + (snow)	5400 PA
Maximum test load +	8100 PA *
Design load - (wind)	1600 PA
Maximum test load -	2400 PA *

\*safety factor 1,5

## PACKAGING

Per Pallet	30 modules
Per Truck	30 pallets

## MECHANICAL SPECIFICATION

